



Global Influenza
Hospital Surveillance
Network

GIHSN-site's experience & Results of season 2015-2016

Prague, Czech Republic

National Institute of Public Health

Hospital Na Bulovce, Dept. of Infectious Diseases

jan.kyncl@szu.cz

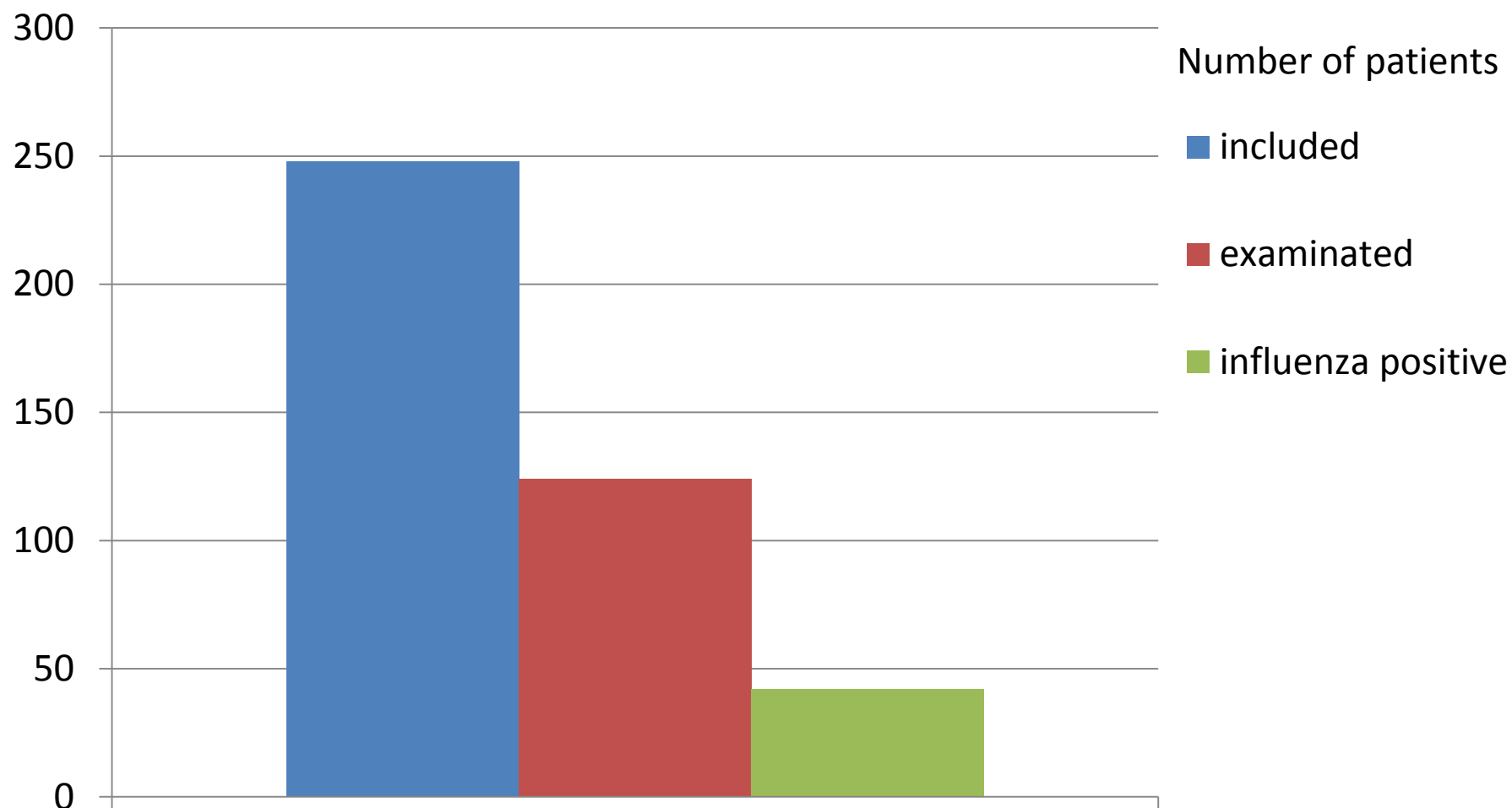


Study management summary

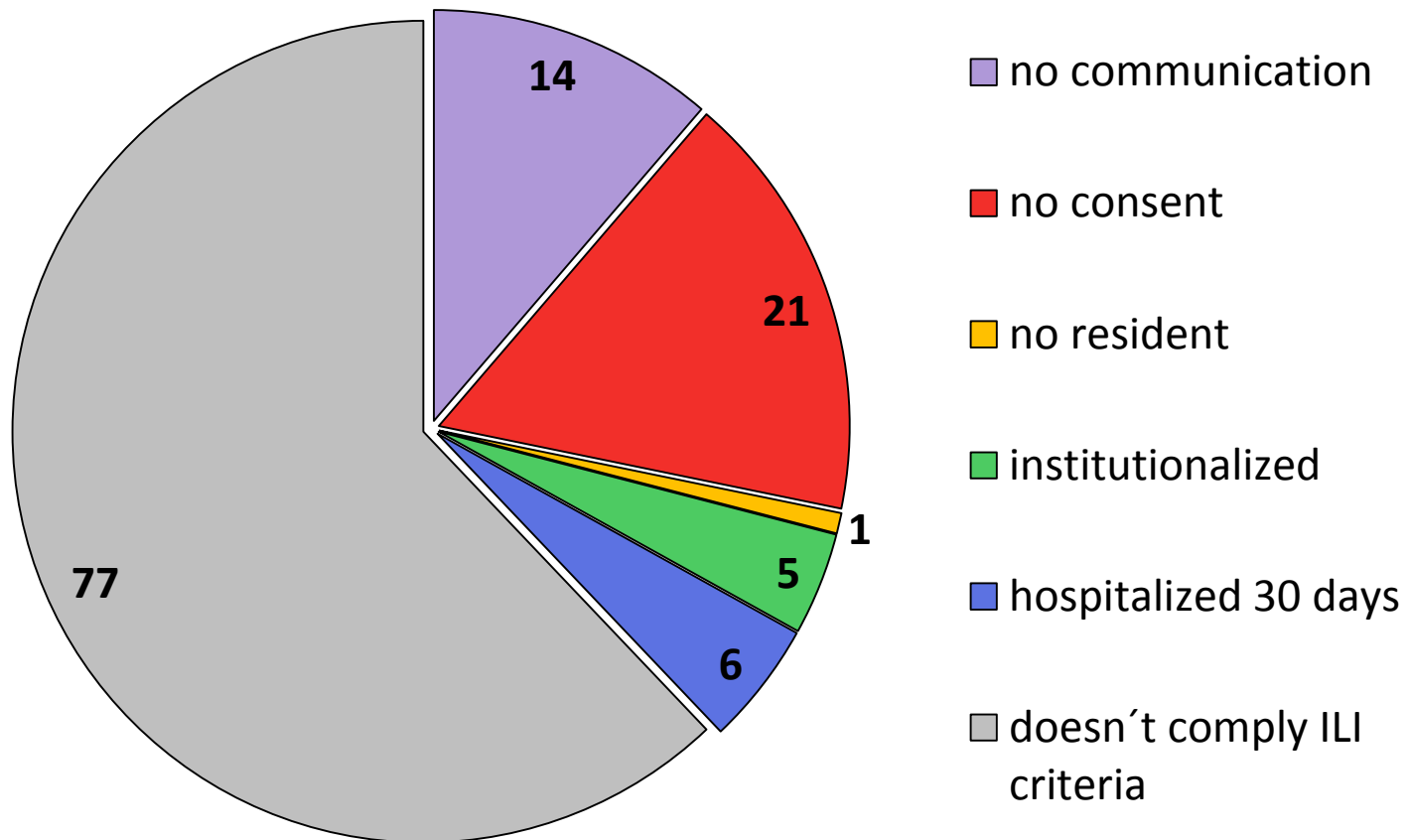
- Name of coordinating institution: **National Institute of Public Health (Dept. of infectious diseases epidemiology)**
- Number of participating hospitals: **1**
- **No** specific demographic features (high proportion of elderly patients, pediatrics, etc.)
- Specific regions covered: **capital Prague and Central Bohemian Region (catchment area of 2.5 million population)**
- Differences with the core protocol ? (specific admission/exclusion criteria, sampling methods?): **only patients older 18 years included**
- Study period: **from 07/Jan/2016 to 28/Apr/2016**



Season 2015-2016 results summary



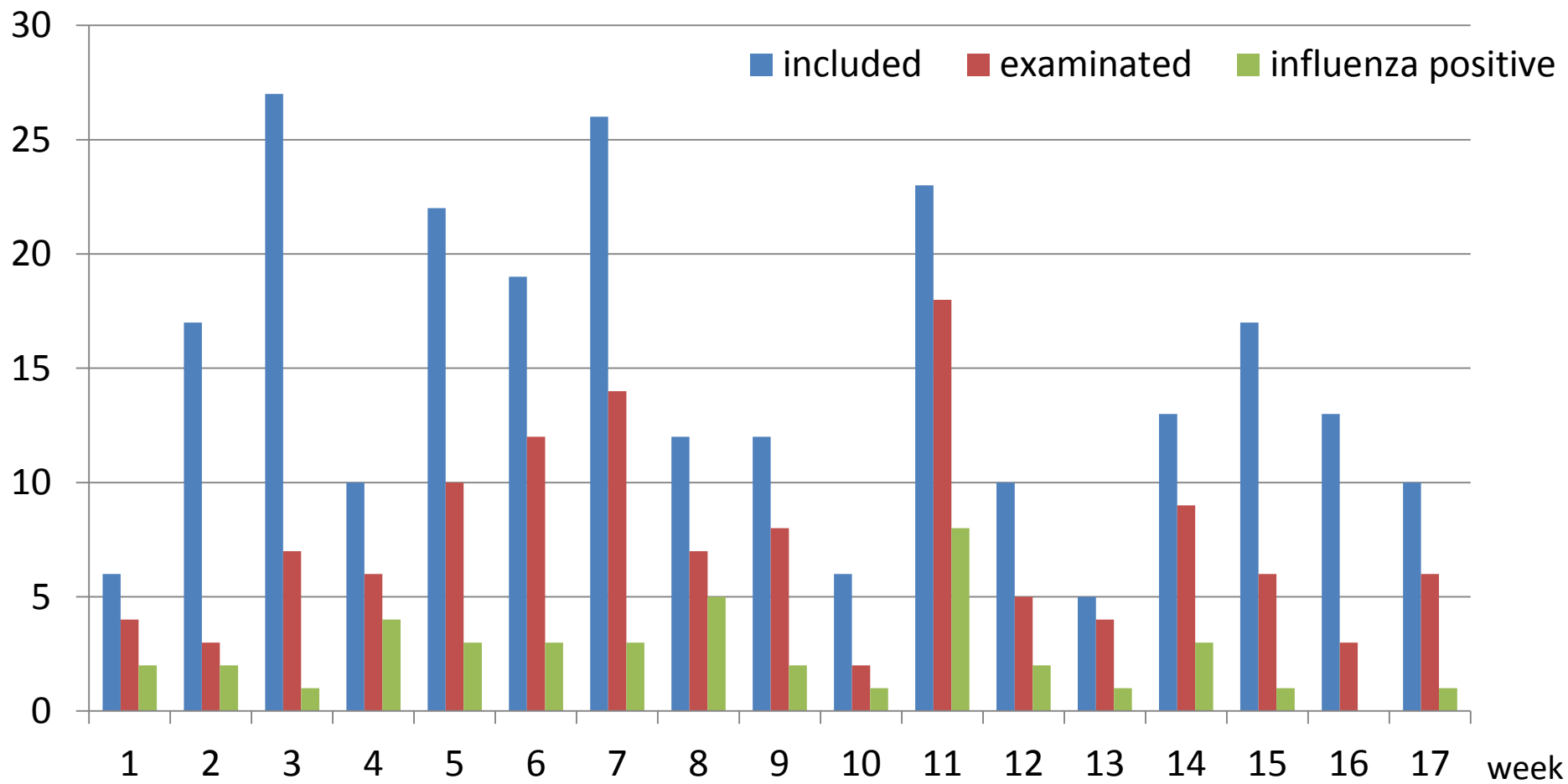
Reasons for exclusion (N = 124)



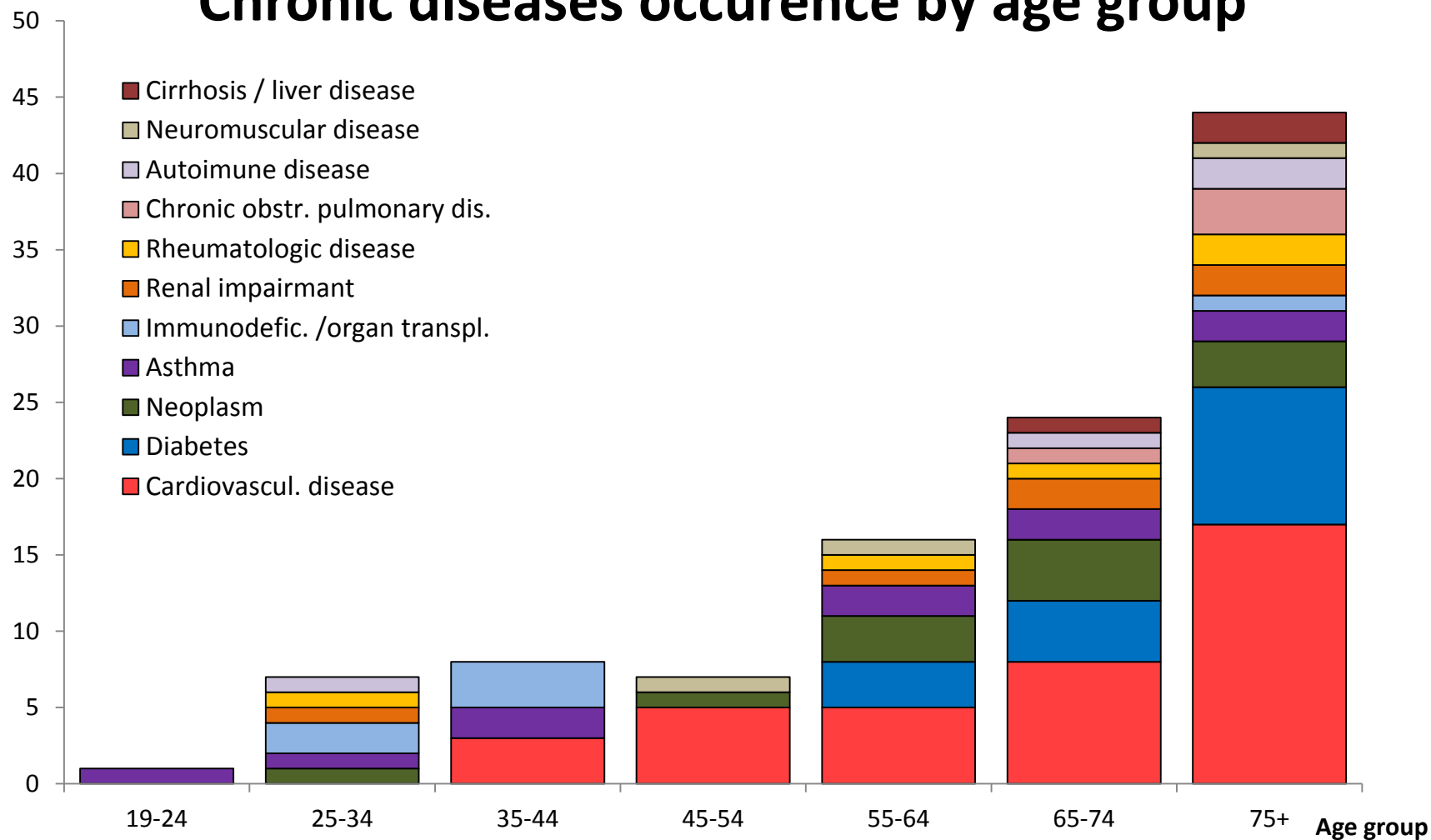


Included patients N=248 (M 122 F 126)	Examined patients N=124 (M 66 F 58)	Influenza positive patients N=42 (M 24 F 18)
Age 18.8 – 90.5 years Median 57.8 years	Age 18.8 -90.5 years Median 48 years	Age 21.0 – 81.3 years Median 44.3 years
	BMI 17.0 – 55.8 Median 26.9	BMI 19.8 – 55.8 Median 27.2

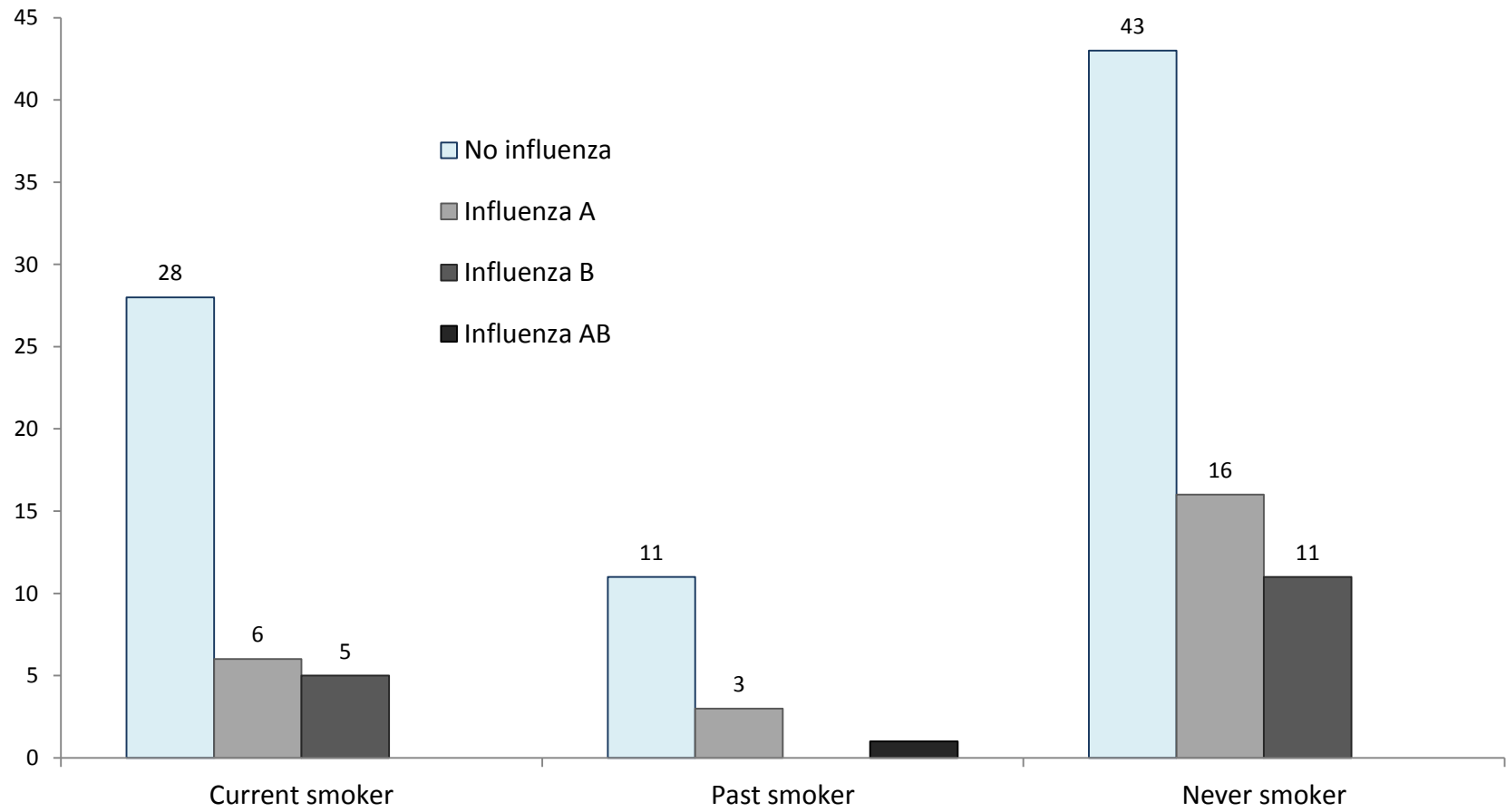
Number of patients by calendar week 2016



Chronic diseases occurrence by age group

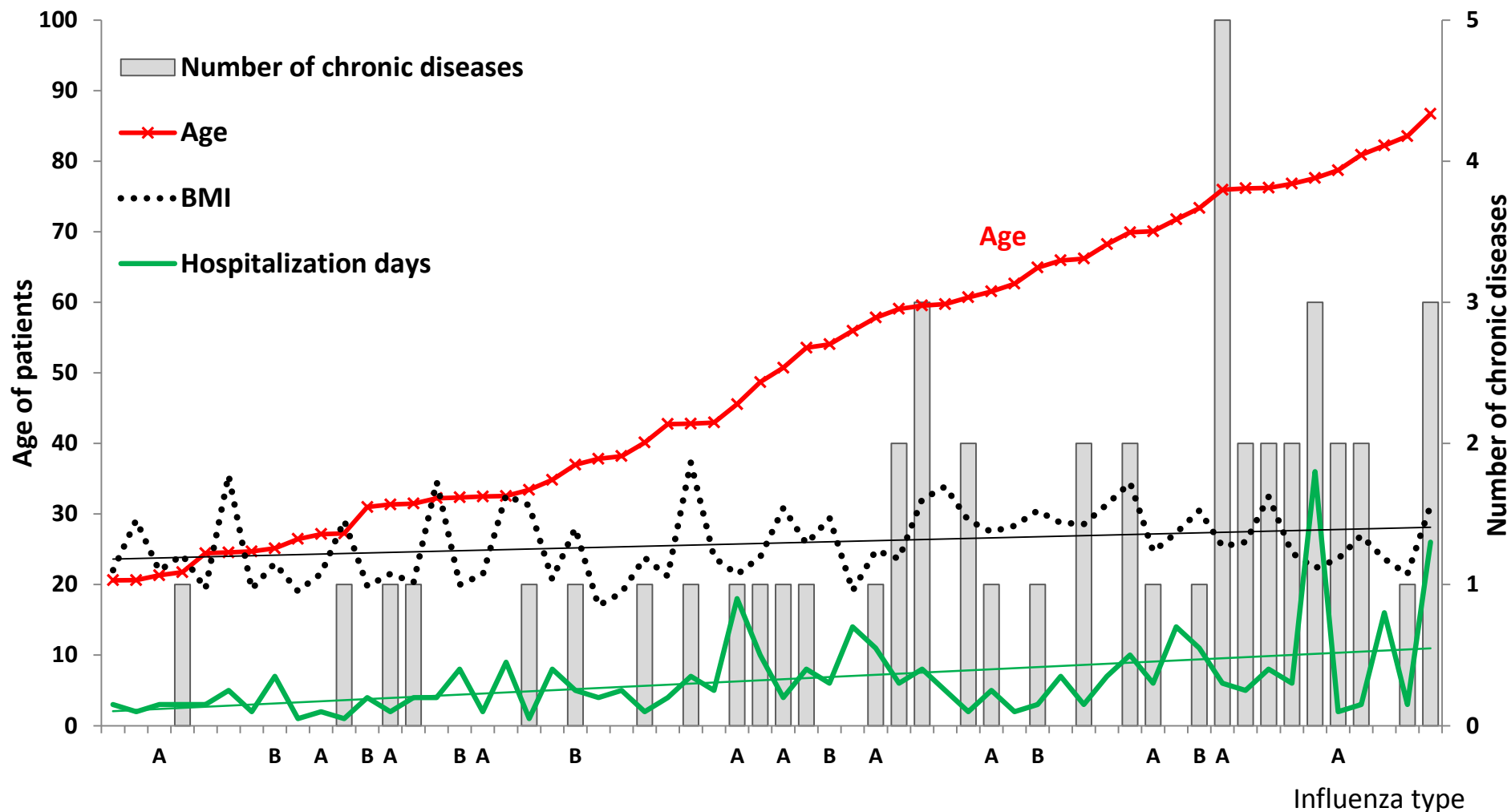


Smoking habits

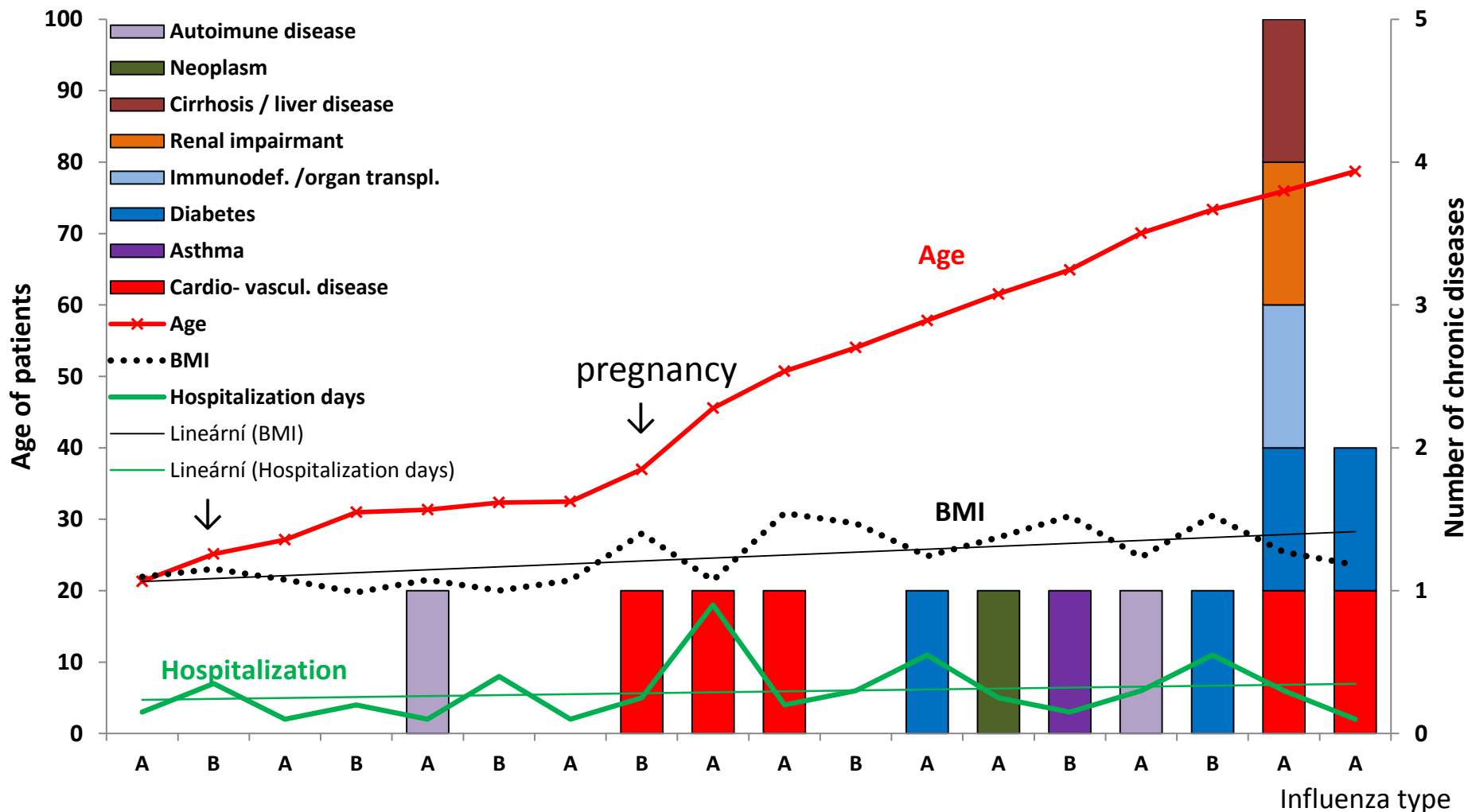




Female patients

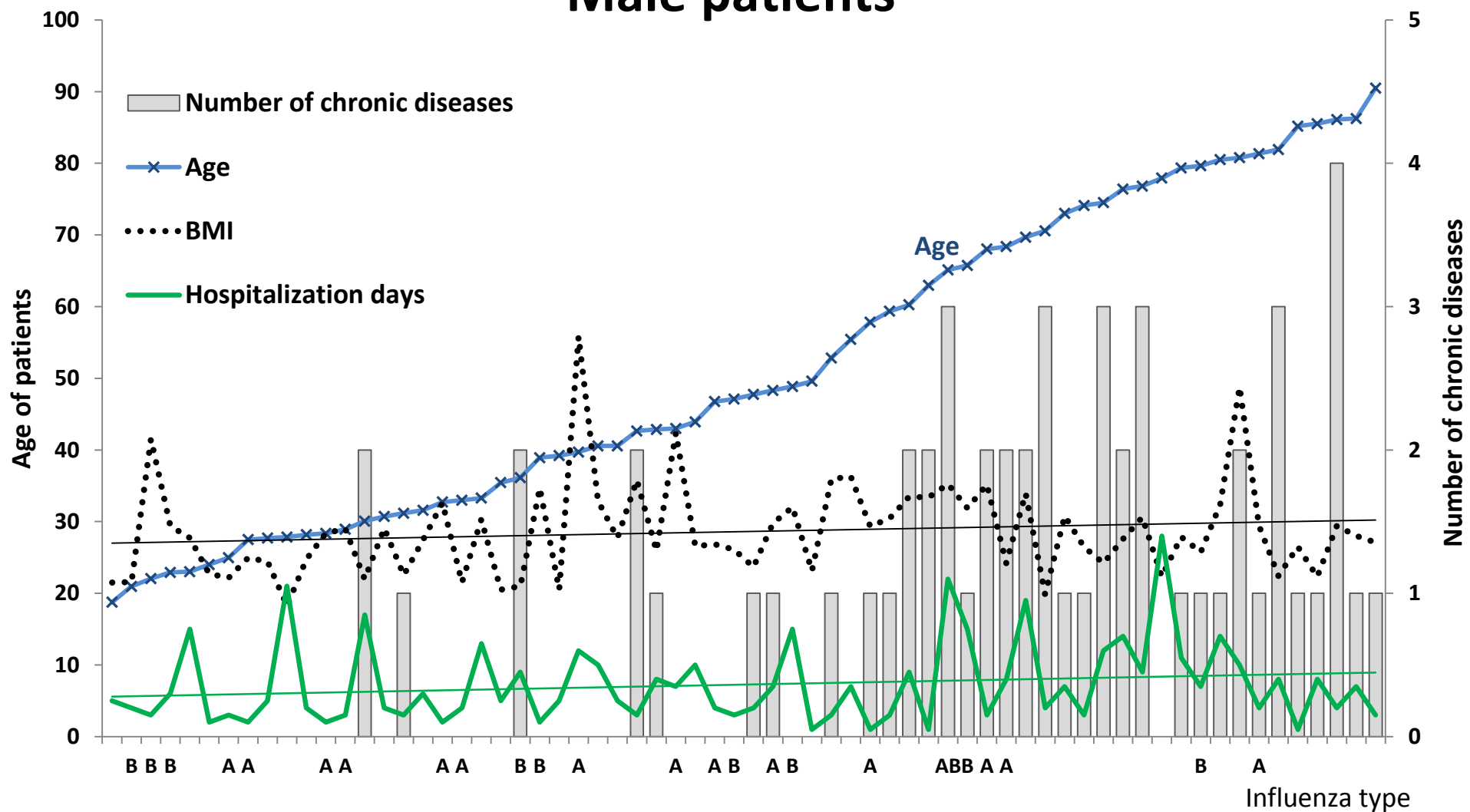


Female patients with influenza



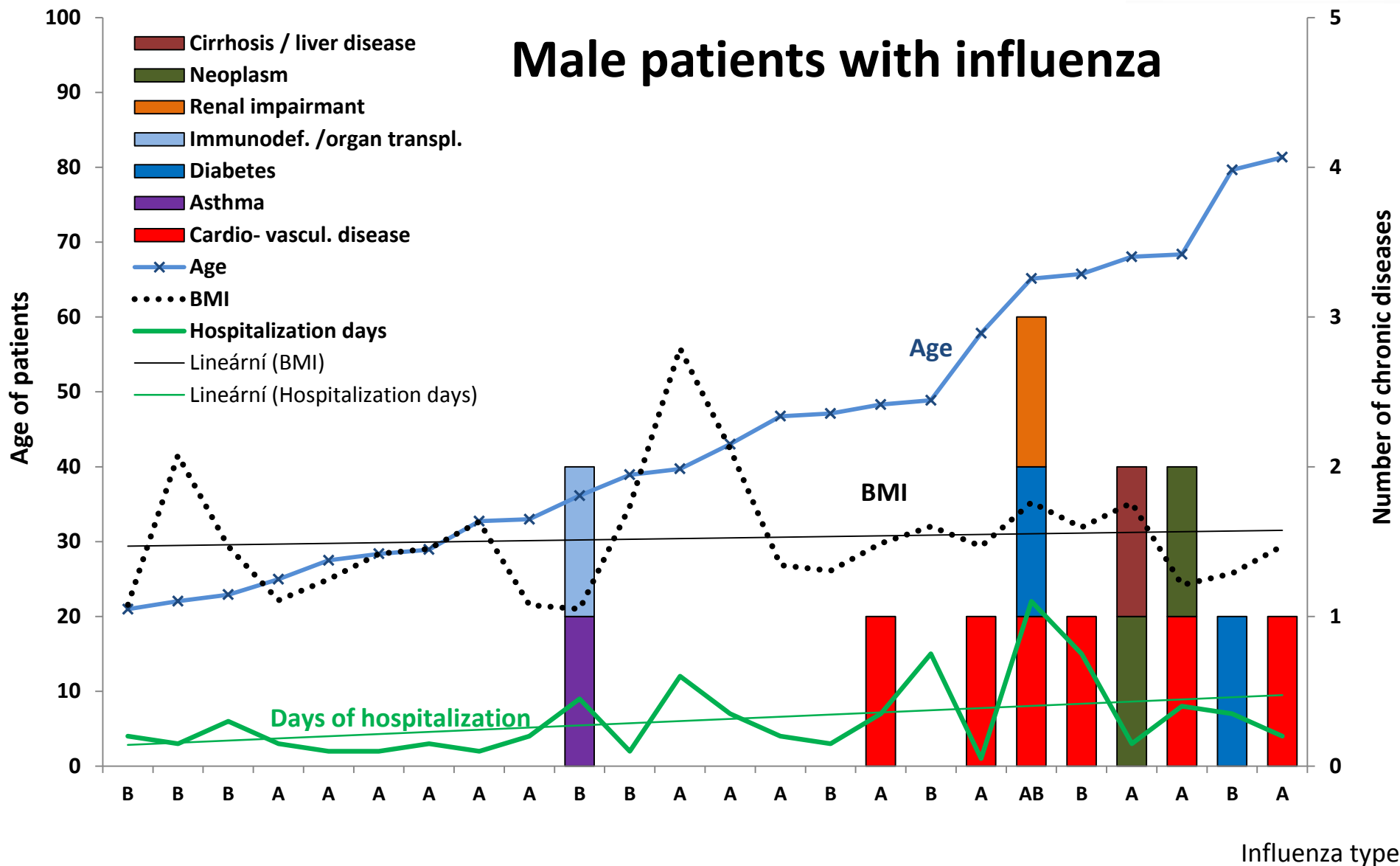


Male patients

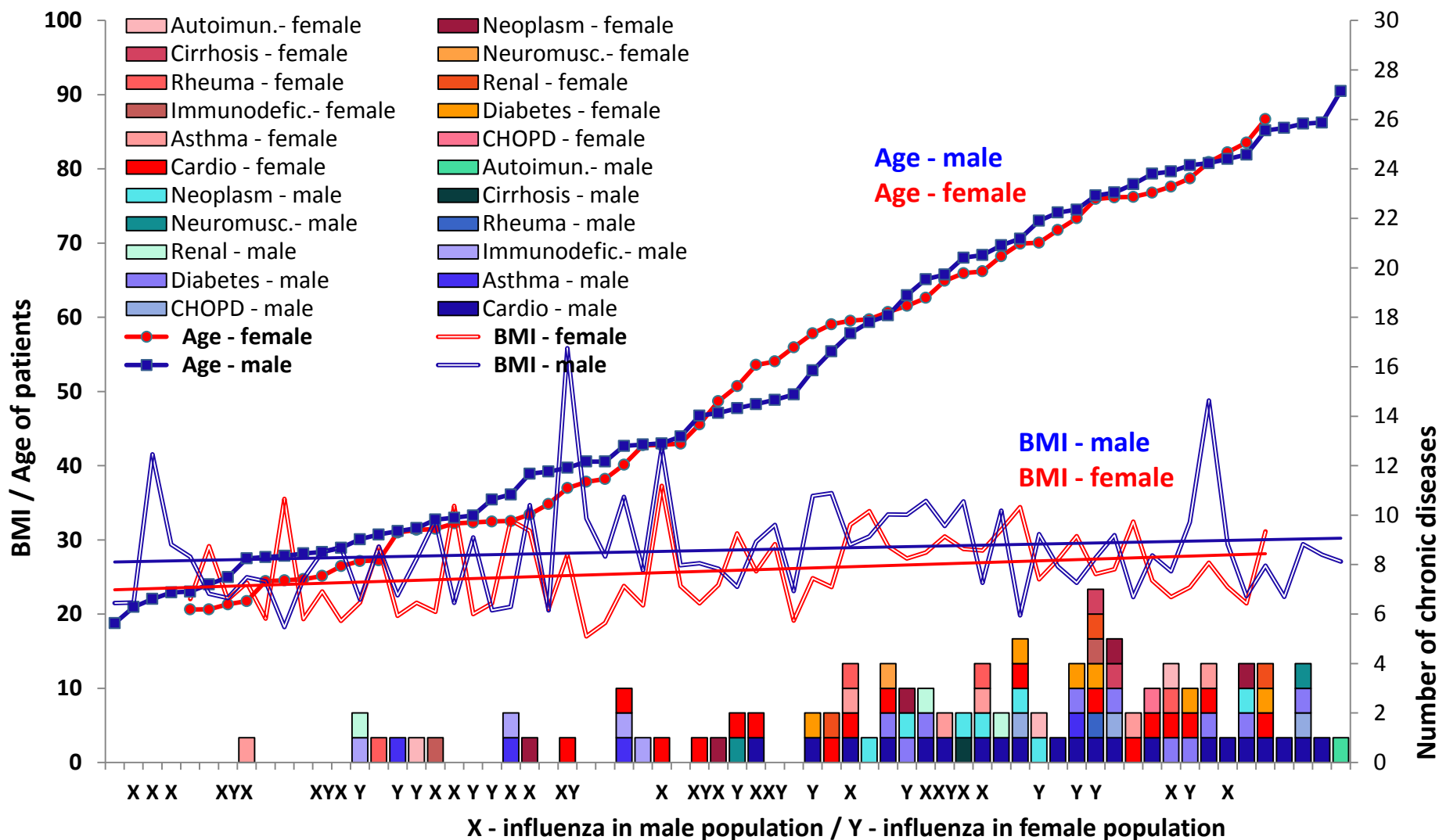




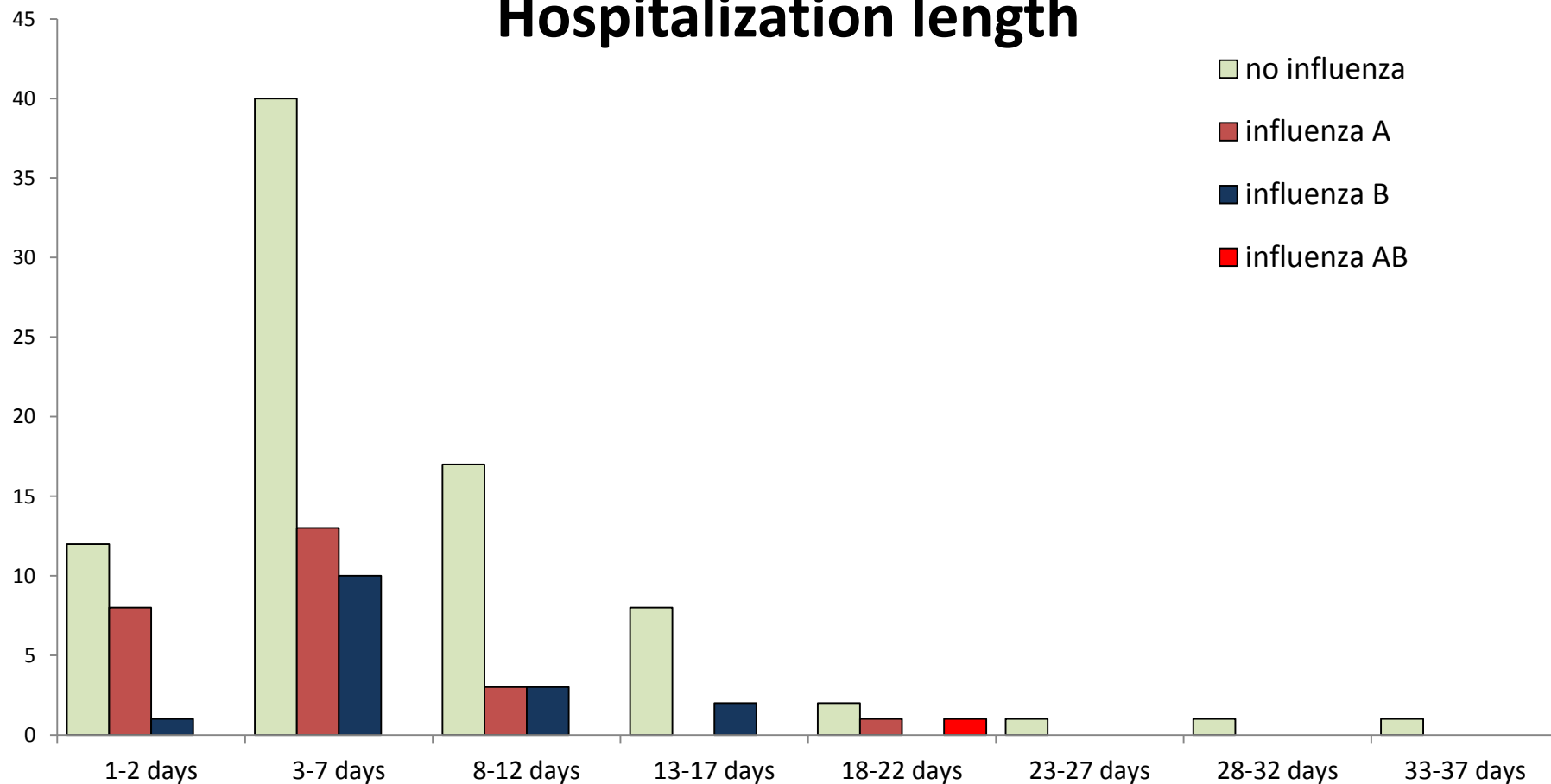
Male patients with influenza



BMI by sex, with dependence on age of patients

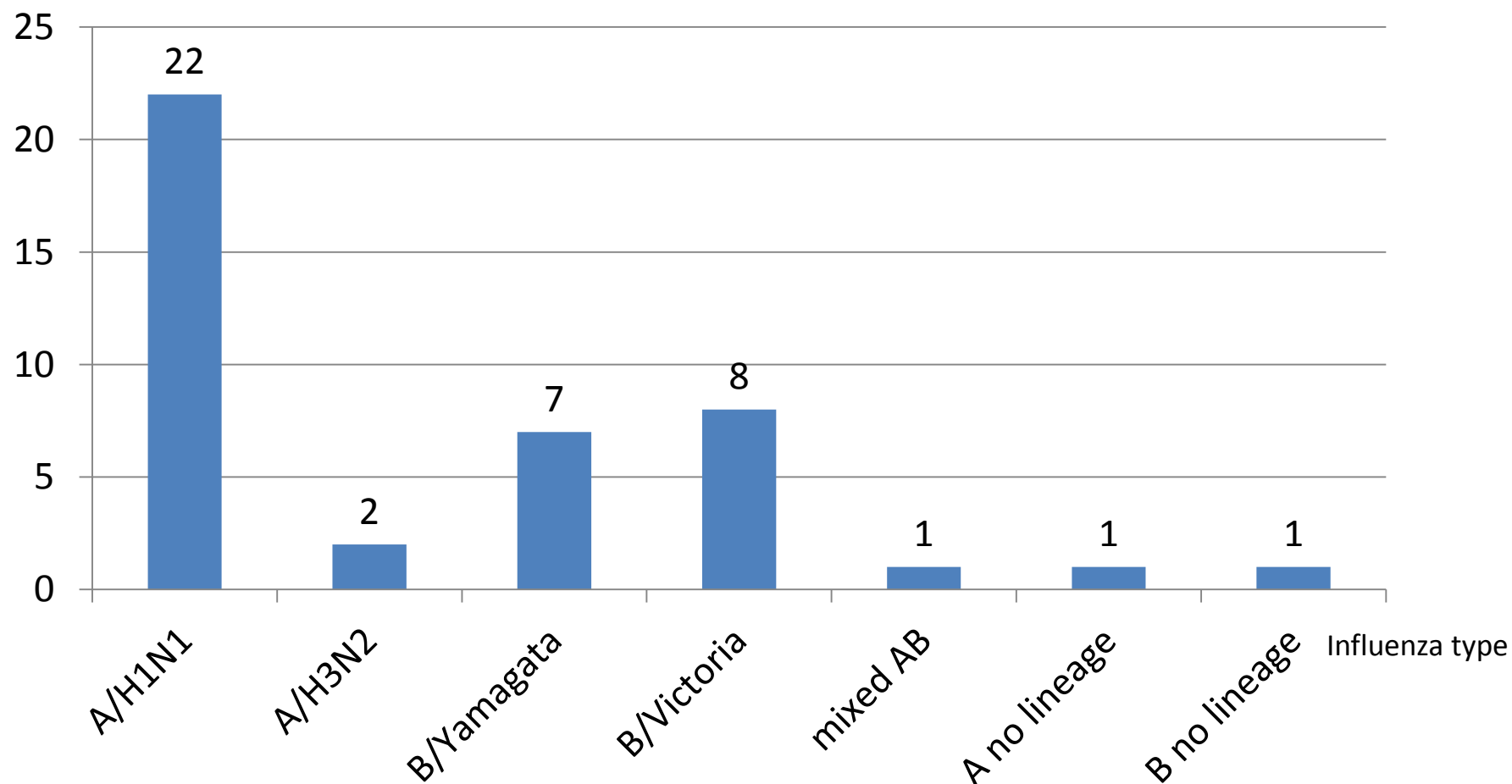


Hospitalization length

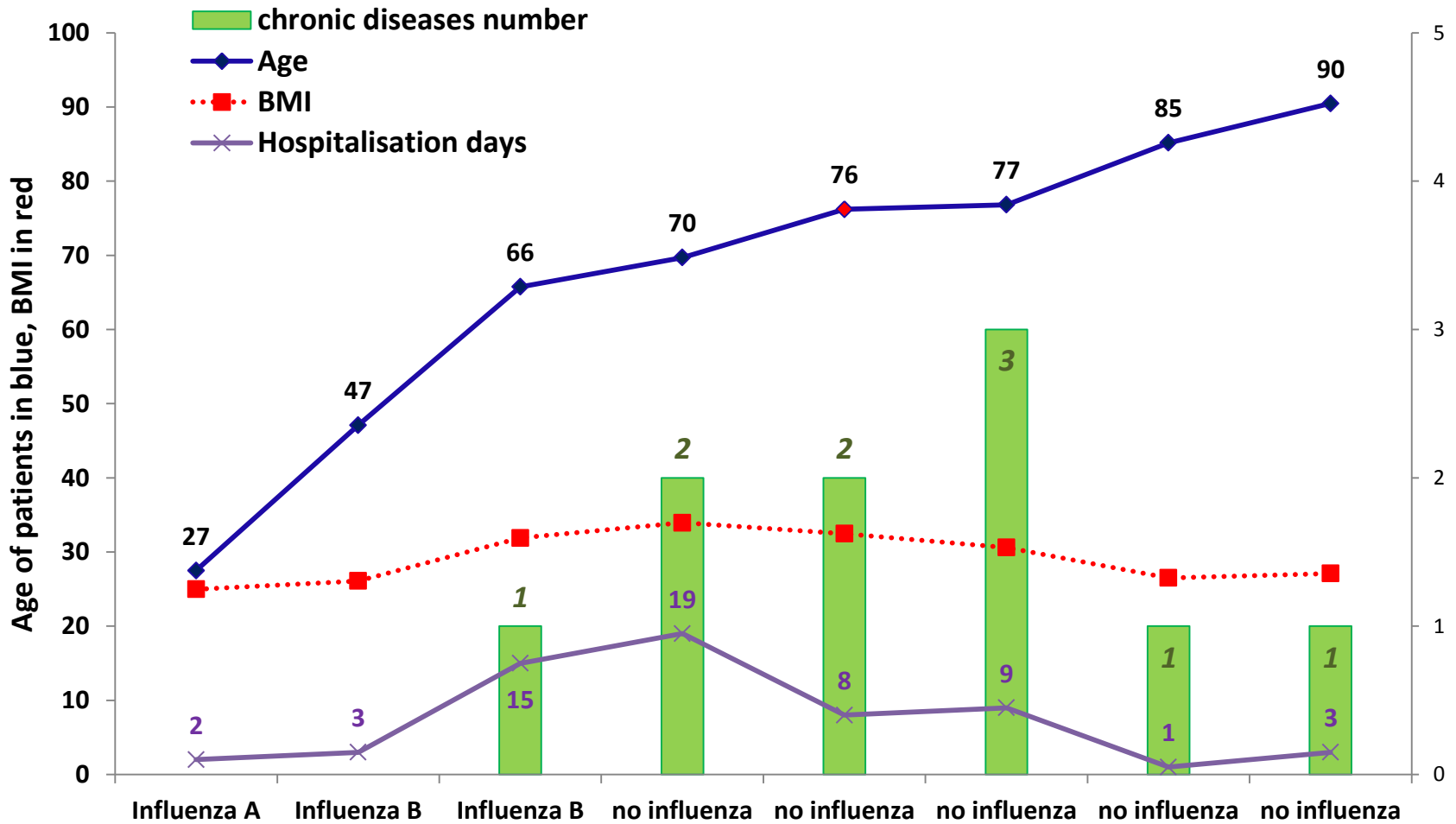




Laboratory results, influenza positive patients (N = 42)

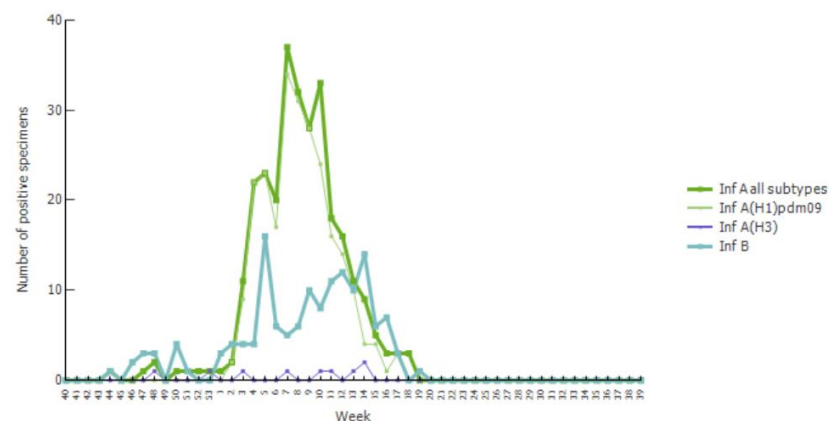
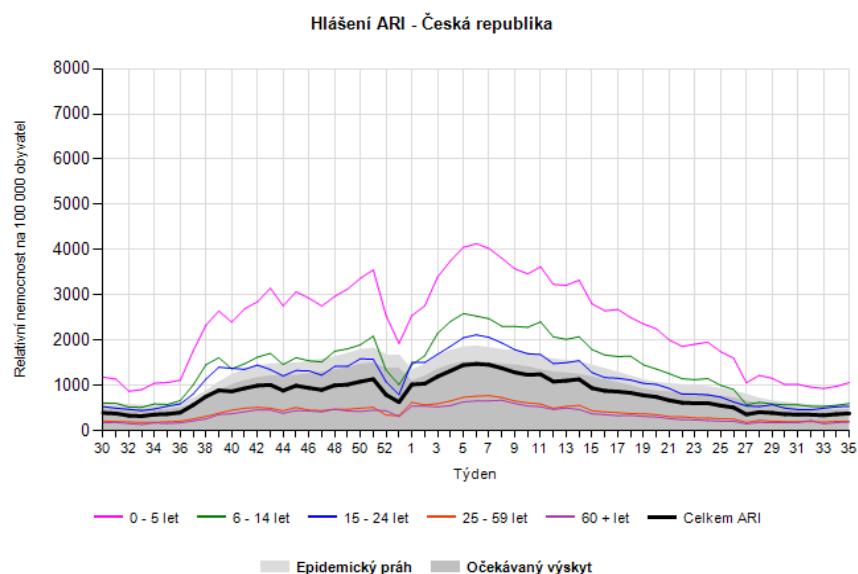


Vaccinated patients (N = 8)



Key aspects from the season

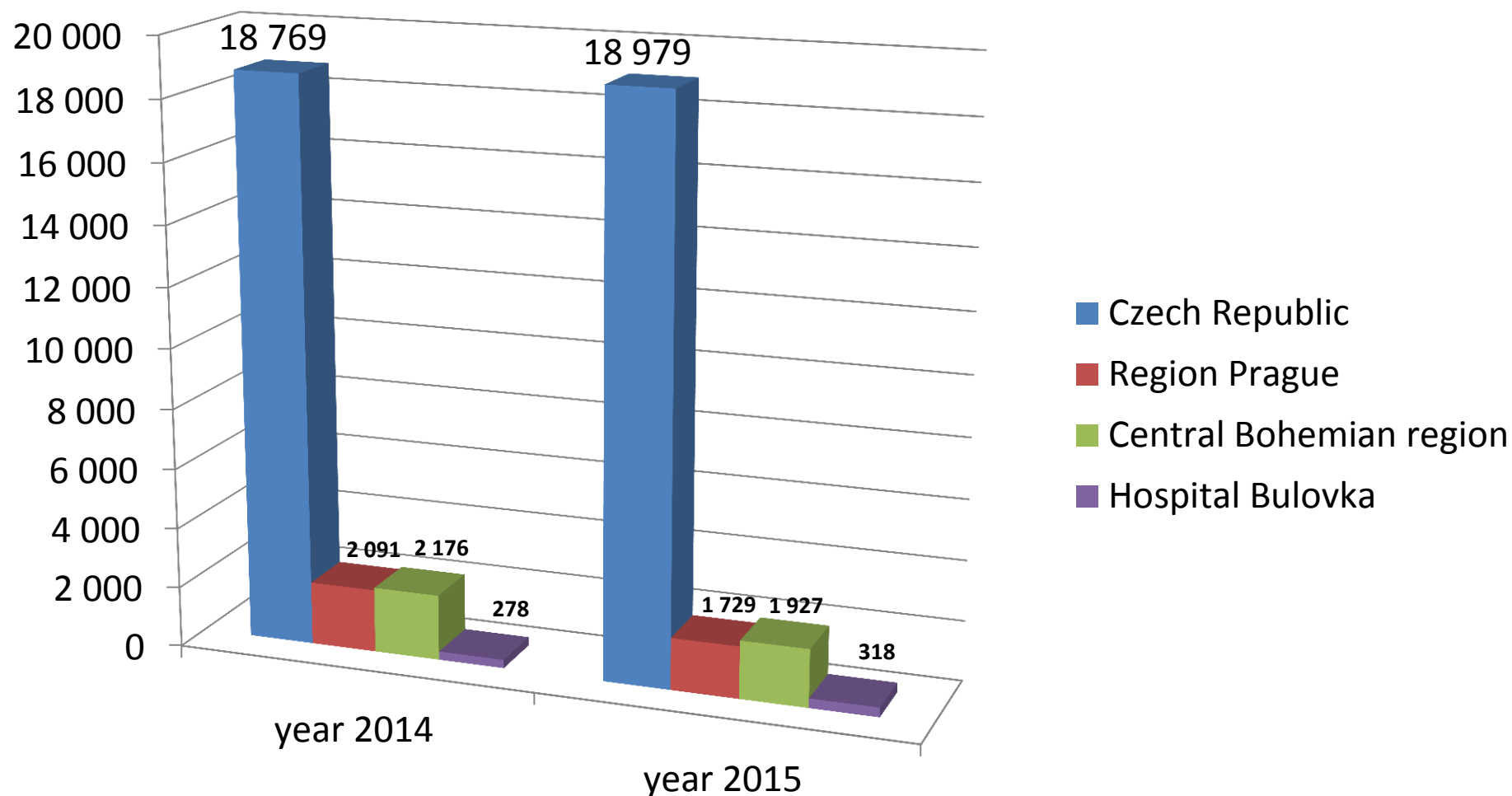
- What were the local team expectations for this year? Specific objectives for the season? Were there specific issues in the study implementation?
 - Enrollment of patients improved
 - Difficulty with obtaining of external data (e.g. pneumonia cases in hospital as well as the whole country for „Disease burden estimation using SARI sentinel surveillance data“)
- Epidemiological characteristics of the influenza season (unusual circulation in the country? Unusual timeline?) **Relatively high numbers of severe disease this season**



Challenges

- Room for improvement?
 - **To improve communication with patients in hospital (with aim to get higher number of informed consent, e.g. to lower the number of excluded patients)**
 - **Better cooperation among institutions to obtain data for „Diseases burden estimation“**
- Strengths and weaknesses
 - **Laboratory of good quality**
 - **Relatively low number of patients but no chance to get another hospital site into the project**

Patient's number with diagnosis pneumonia





Thank you for your attention

